

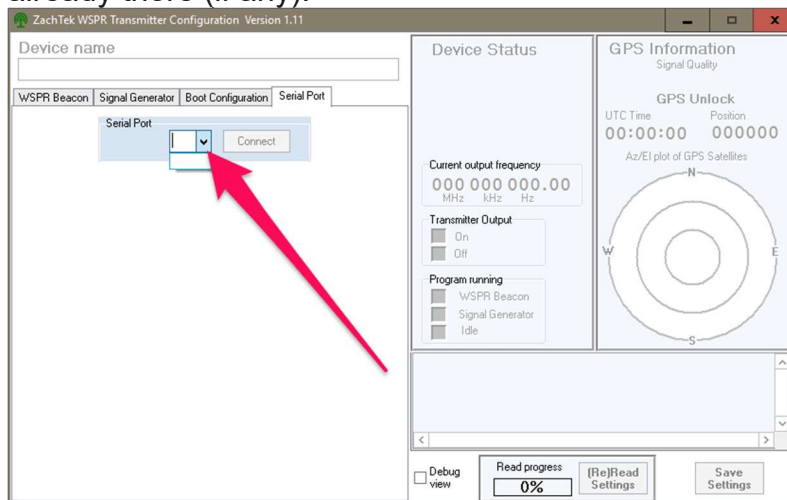
# Quick Setup for WSPR Desktop transmitter

## Setting the configuration for the Transmitter.

- A. Download and install the Configuration software from my web [www.zachtek.com/download](http://www.zachtek.com/download)
- B. Connect the included GPS antenna to the GPS input.  
Put the GPS puck near a window to get a good GPS signal.
- C. Connect the USB cable to the transmitter but do not connect it to the computer at this time.
- D. On the other side of the box, connect a suitable HF antenna to the port marked Transmitter Output.



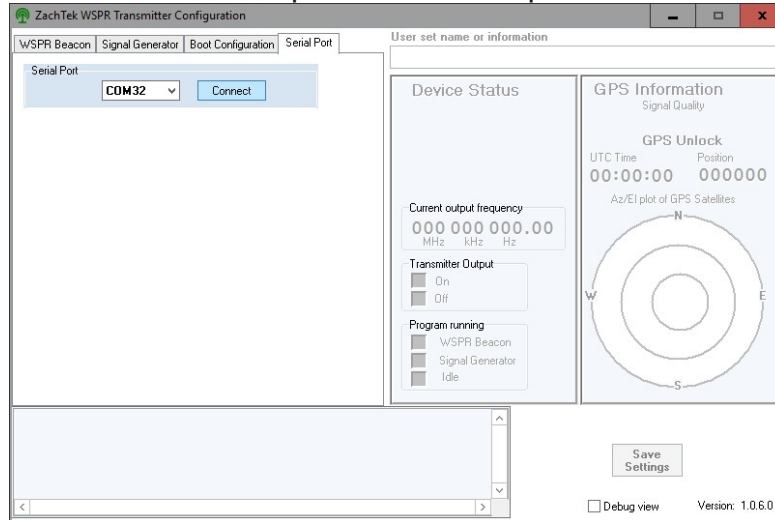
- E. Start the configuration software and on the Serial Port tab click the little chevron to see all the serial ports already in your computer. Make a note of the serial ports already there (if any).



Next, plug in the USB cable from the transmitter to the computer and click the chevron again to see the list of available serial ports.

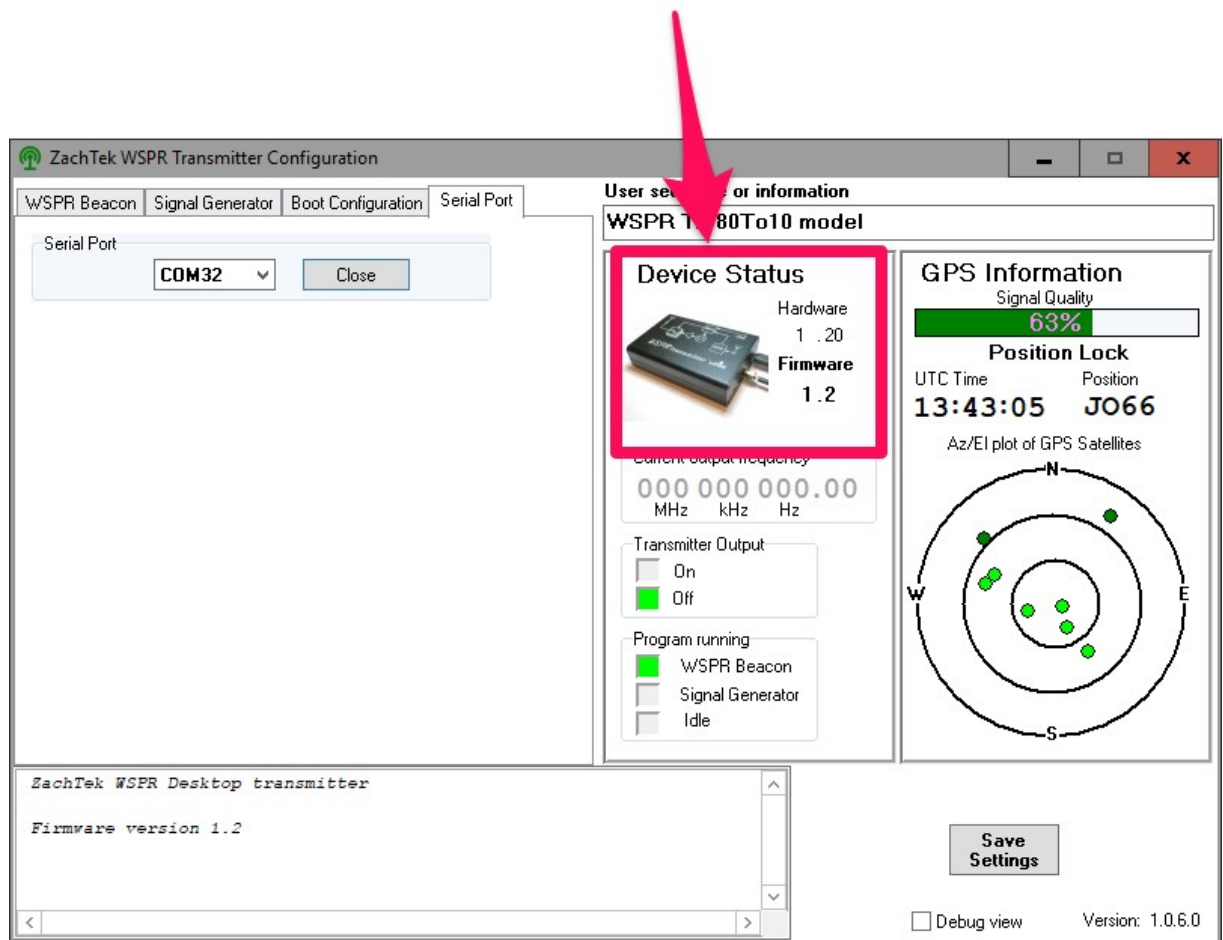
There should be a new serial port in the list, if you cannot find a new serial port then read ***“Installing Windows driver for serial port”*** in the Appendix later in this guide” and then come back to this point.

- F. Pick the new Serial port from the drop down list and click the “Connect” button.



- G. If the communication was successful, you will see a picture of the transmitter. If the picture do not show up, try to just close the serial port and reconnect to it again using the connect button.

**Transmitter model is shown here**

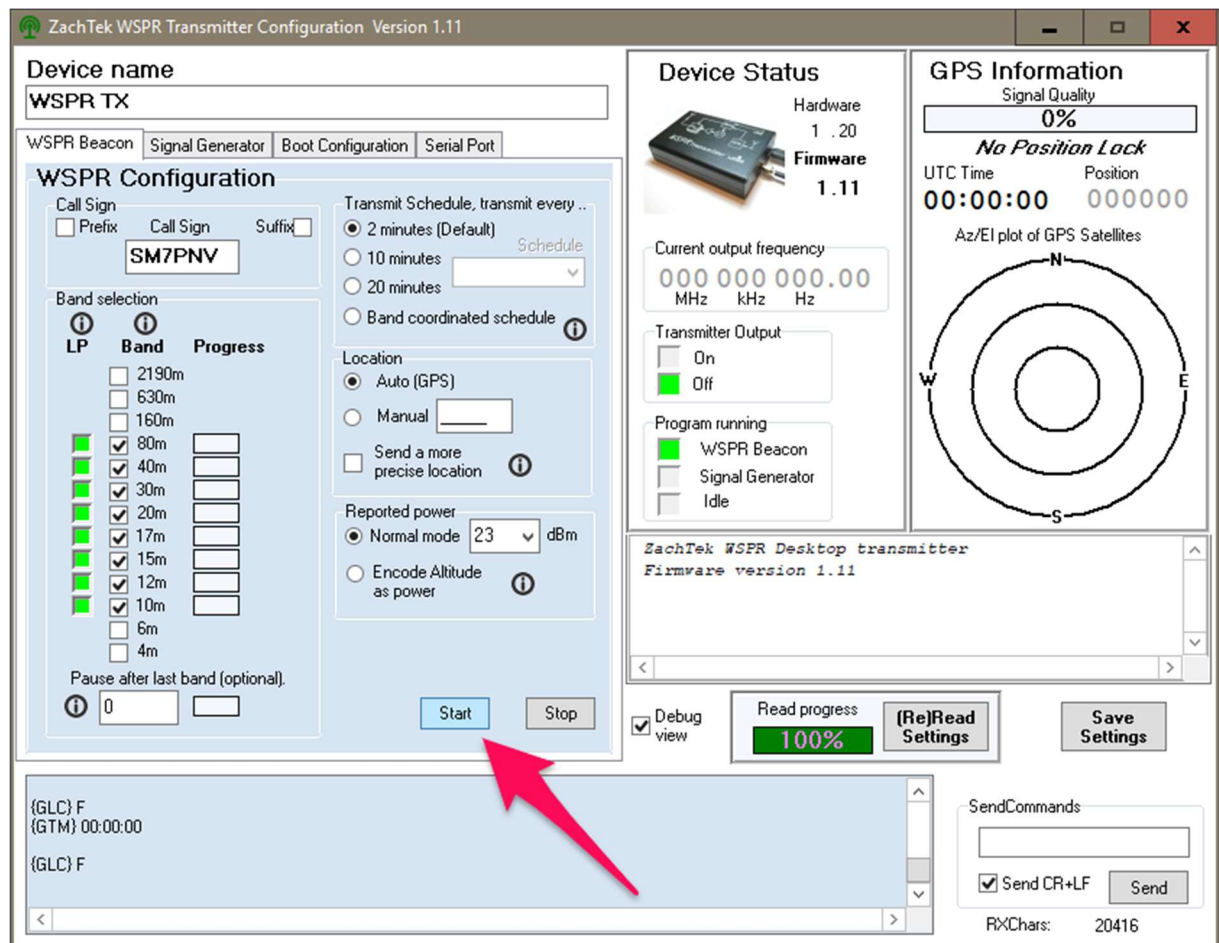


H. Click the WSPR Beacon Tab.

I. Set your call sign and enable the bands you want to transmit on then click the Save button.

J. To start the WSPR beacon click the “Start” button.

Note that the “Program running” will indicate WSPR Beacon now in the Device Status panel



K. Once the WSPR mode has been started it will continually transmit the WSPR beacon on all bands that are enabled. If you change something in the software while the beacon is running it, will temporary drop out of WSPR beacon mode to handle the new setting. It will then go back in to beacon mode again.

## Running the Transmitter standalone

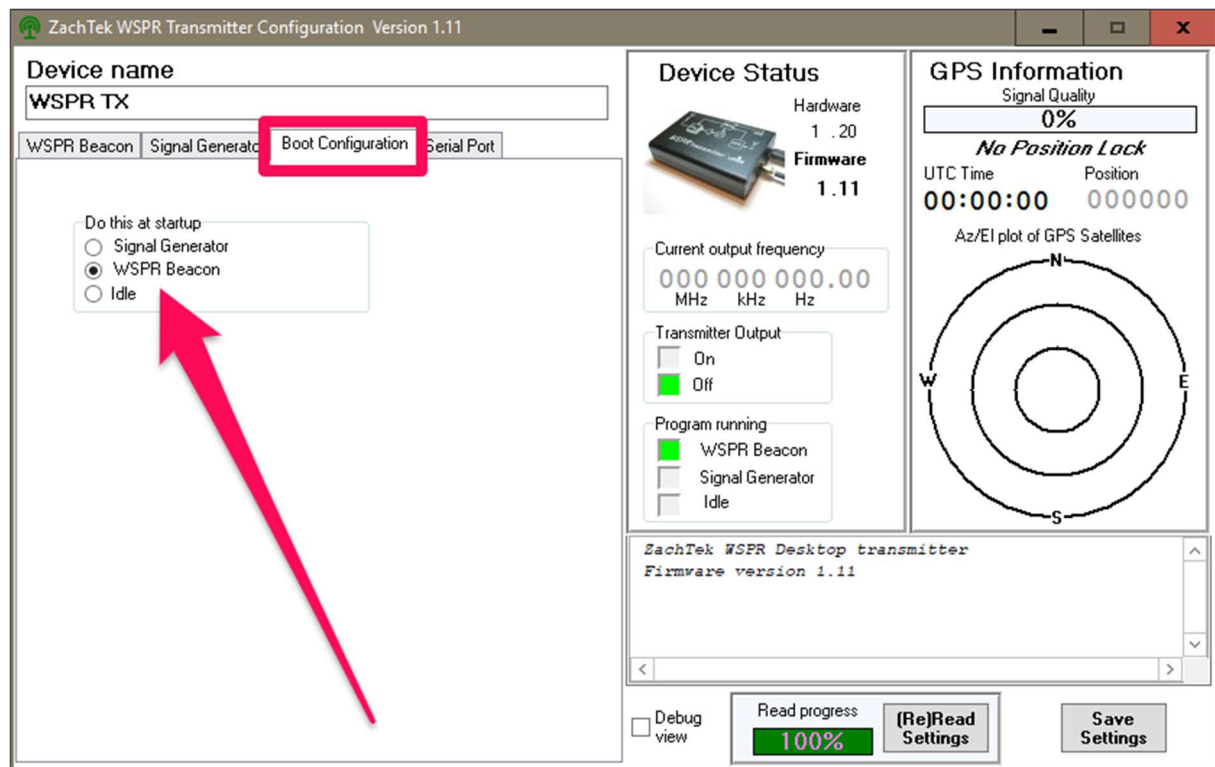
The transmitter do not need to be plugged in to a computer to run. It can be powered from another power source like a phone charger or a power bank.

To prepare for unattended operation you first need to set the Boot Configuration

Click the Boot Configuration tab and set the startup option.

Most likely, you want to set it to WSPR Beacon mode.

See picture.



Once this setting is saved, the transmitter can be unplugged from the computer and be powered from another power source. It will run continuously 24/7 as long as it has a GPS fix.

The Yellow status LED indicate what it is doing.

- Off= Waiting/Idling.
- Blinking once per second=No GPS lock, acquiring position from the GPS Satellites.
- Double blink every second=GPS has a lock, waiting to start transmission when the correct time is reached.
- Pulsating rapidly=Transmitting WSPR packet.
- Blinking once every eight second, pausing the transmission at the end of a band cycle

I hope this information is enough to get you started and get you on the air. If you need more information, check out the documentation pages on my website or email me at [harry@zachtek.com](mailto:harry@zachtek.com).

See you on the bands!  
//Harry SM7PNV

Appendix.

### **Installing Windows driver for serial port.**

If you cannot find a serial port that seems to connect to the transmitter you might need to install a driver for it to appear.

You will find a Windows driver in my download section on my web <https://www.zachtek.com/download>

Download and install that, then restart your computer before trying again.